



MANHOLES STEPS: SPECIAL LINE

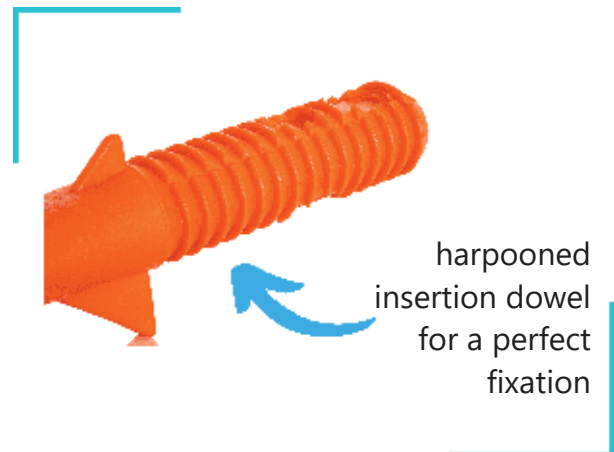


General characteristics

- Polypropylene copolymer reinforced calibrated steel with hardness of 65kg / mm².
- Manufactured for curved and straight surfaces.
- Ergonomic design, compact, robust and with great resistance to impact.
- IVERNA is one of the few companies that owns a quality laboratory to surpass the EN 13101 tests required in every batch of 1000 units.
- Conformity to European Standard EN-13101, American ASTM C-478, C-497 and DIN19555.

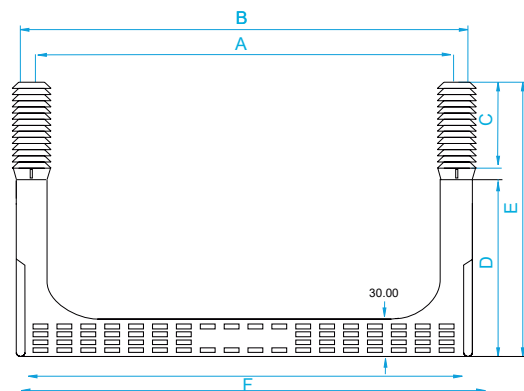
Installation

Drill two holes at 85mm depth with a ø25mm drillbit for concrete. The distance between the centers of the holes must be 380mm. Introduce the manhole step hitting alternatively at the sweetspots with a big size nylon hammer. Repeat the process with each manhole step, leaving a recommended distance of 250 mm in between the step irons.



Manhole Step 400 C-R y Pate 400 C-R Plus

400 C-R and 400 C-R PLUS steps are the only manhole steps on the market that exceeds the standards established by LPRL 31/1995 Law of Prevention of Labour Risks and Royal Decree 486/1997, for security and health in working places.



	A	B	C	D	E	F	G		
400 C-R	380	407	80	160	240	389,77	402	Caja/box 25uds./units	naranja / orange
400 C-R ZINC	380	407	80	160	240	389,77	402	Caja/box 25uds./units	naranja / orange
400 C-R INOX AISI 304	380	407	80	160	240	389,77	402	Caja/box 25uds./units	naranja / orange
400 C-R INOX AISI 316	380	407	80	160	240	389,77	402	Caja/box 25uds./units	naranja / orange
400 C-R PLUS/ZINC	380	407	80	190	270	388,77	402	Caja/box 25uds./units	naranja / orange