



MANHOLES STEPS: SPECIAL LINE



Manhole Step for Drinking Water

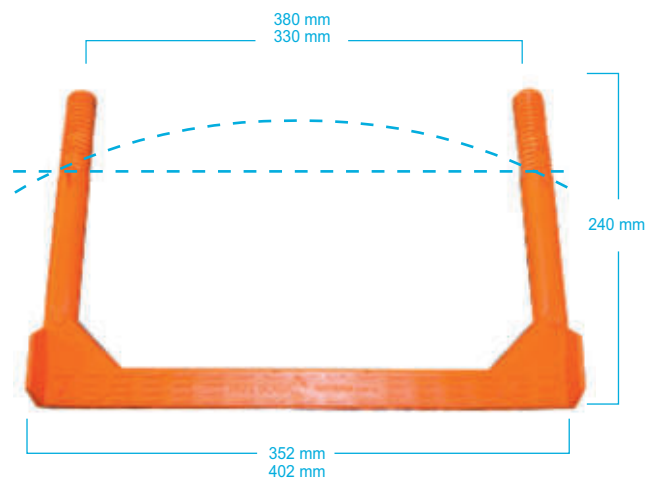
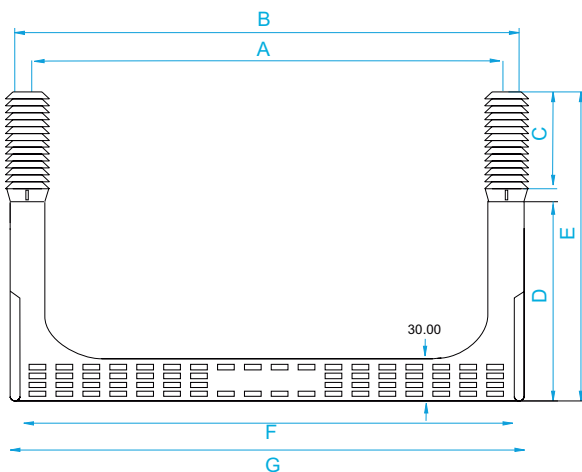
Characteristics

- 100% non-recycled polypropylene copolymer.
- Ergonomic design with slip proof grooves.
- Doser grooves for chemical plugs.
- Same step for curved and straight surfaces, ideal to minimize stock.
- Crash limit for a perfect fit.
- Customizable anti-slip floor.
- Coloring fit for drinking water.
- Calibrated stainless steel rod AISI-316, hardness tensile of 80 kg/mm2.

Installation

Drill two holes with a heavy hammer drill (85mm. depth), using a 25mm ø broach. The distance between the center of the holes is 330 or 380mm depending on model).

Introduce the Pate hitting alternatively in both sides of it with a big size nylon hammer.



	A	B	C	D	E	F	G	25 unid/caja 25 units/box	
330 C-R Drinking W.	330	357	80	160	240	339,77	352	Palet 1000 uds./units	naranja / orange
400 C-R Drinking W.	380	407	80	160	240	389,77	402	Palet 1000 uds./units	naranja / orange