



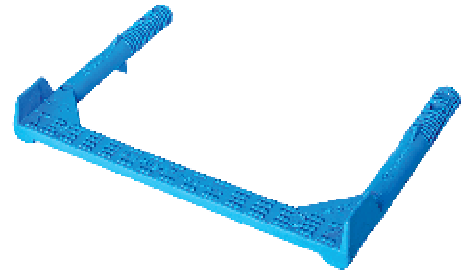
MANHOLES STEPS: SPECIAL LINE



Marine Step

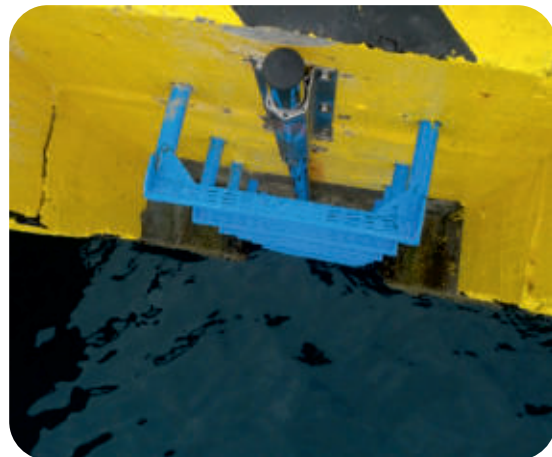
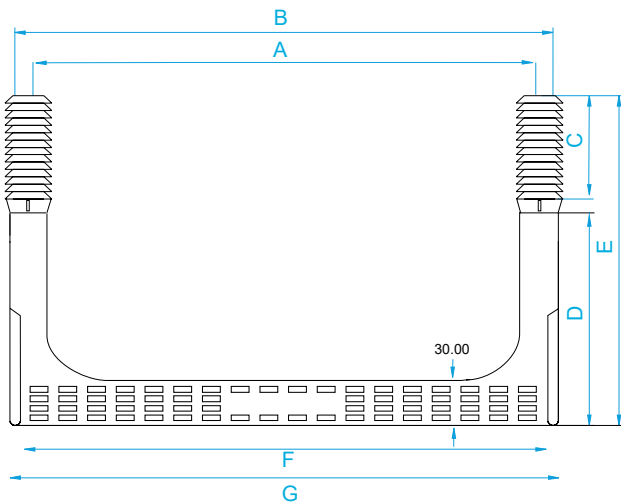
Characteristics

- 100% non-recycled polypropylene copolymer.
- Ergonomic design with slip proof grooves.
- Doser grooves for chemical plugs.
- Valid for installation in curved and straight surfaces.
- Crash limit for a perfect fit.
- UV extra protection for excellent durability outdoors.
- Calibrated stainless steel rod AISI-304 / 316, hardness tensile of 80 kg/mm².
- Manufactures under the Norm EN-13101, ASTM C-478, C-497 and AS 4198:2022.



Installation

Drill two holes with a heavy hammer drill to a depth of 85 mm with a $\varnothing 25$ mm drill bit. Insert the step hitting alternately on the lateral crash limit with a nylon mallet until introducing the total depth of insertion, so that only the rectangular or round part of the step is visible.



	A	B	C	D	E	F	G	25 unid/caja 25 units/box	
330 C-R MARINE INOX AISI 304	330	357	80	160	240	339,77	352	Palet 1000 uds./units	azul / blue
330 C-R MARINE INOX AISI 316	330	357	80	160	240	339,77	352	Palet 1000 uds./units	azul / blue