

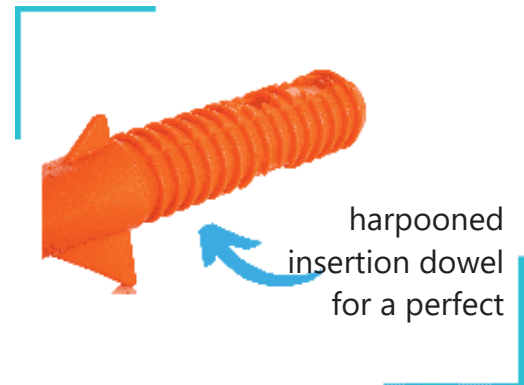


MODERN LINE

PATE SUGAR[®]

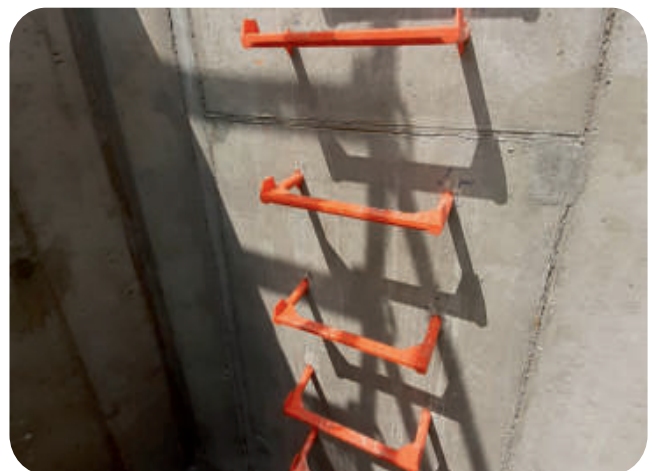
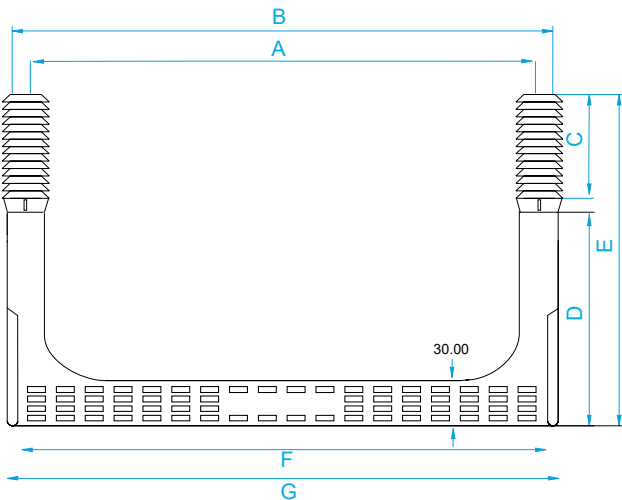
Characteristics

- Pate Sugar is manufactured with non-recycled polypropylene copolymer and high-quality steel (hardness tensile 65 kg/ mm²) to ensure durability and long life of the step.
- Can be manufactured with stainless-steel AISI-316 or zincated steel.
- Valid for installatino in curved or straight walls.
- Crash limit for a perfect fit and customizable anti-slip floor.
- It complies with the European EN-13101, American ASTM C-478 / C-497 and Australian AS 4198-2022 quality regulations.



Installation

Drill two holes at 85mm depth with a ø25mm drillbit for concrete. The distance between the centers of the holes must be 300, 330, 340mm, depending on the model. Introduce the manhole step hitting alternatively at the sweetspots with a big size nylon hammer.



| model | measures | | | | | | |
|--------------|----------|-----|----|-----|-----|-----|-----|
| | A | B | C | D | E | F | G |
| 340 C-R Plus | 340 | 367 | 80 | 190 | 270 | 349 | 362 |
| 330 C-R Plus | 330 | 357 | 80 | 190 | 270 | 339 | 352 |
| 300 C-R Plus | 300 | 327 | 80 | 190 | 270 | 309 | 322 |
| 340 C-R | 340 | 367 | 80 | 160 | 240 | 349 | 362 |
| 330 C-R | 330 | 357 | 80 | 160 | 240 | 339 | 352 |
| 300 C-R | 300 | 327 | 80 | 160 | 240 | 309 | 322 |



| package | Full pallet | colour |
|-----------------------------|------------------------|------------------|
| 25 unid/caja - 25 units/box | Pallet 1000 uds./units | naranja / orange |