



MANHOLES STEPS: SPECIAL LINE



General characteristics

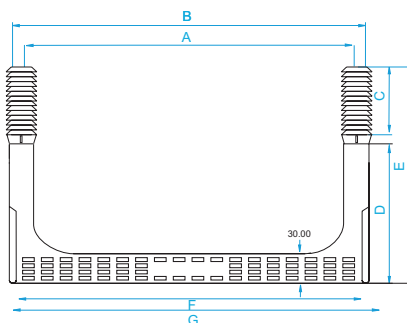
- Polypropylene copolymer reinforced calibrated steel with hardness of 65kg / mm².
- Manufactured for curved and straight surfaces.
- Ergonomic design, compact, robust and with great resistance to impact.
- Non-slip surface and side fins.
- Crash limit for the correct insertion of the manhole step.
- Personalized up to the customer's needs.
- Conformity to European Standard EN-13101, American ASTM C-478, C-497 and German DIN19555.
- IVERNA is one of the few companies that owns a quality laboratory to surpass the European Norm EN 13101 tests required in every batch of 1000 units.

Installation

Drill two holes with a heavy hammer drill (85mm. depth), using a 25mm ø broach. The distance between the center of the holes is 330, 320 or 300mm depending on model). Introduce the Pate hitting alternatively in both sides of it with a big size nylon hammer.

Pate 400 C-R y Pate 400 C-R Plus

400 C-R and 400 C-R PLUS steps are the only manhole steps on the market that exceed and surpass the quality tests and standards established by LPRL 31/1995 law, Law of Prevention of Labour Risks and Royal Decree 486/1997, for security and health in working places.



Modelo / model	Medidas / measures							Embalaje / package	Color / colour
	A	B	C	D	E	F	G		
400 C-R	380	407	80	160	240	389,77	402	Caja/box 25uds./units	naranja / orange
400 C-R ZINC	380	407	80	160	240	389,77	402	Caja/box 25uds./units	naranja / orange
400 C-R INOX AISI 304	380	407	80	160	240	389,77	402	Caja/box 25uds./units	naranja / orange
400 C-R INOX AISI 316	380	407	80	160	240	389,77	402	Caja/box 25uds./units	naranja / orange
400 C-R PLUS/ZINC	380	407	80	190	270	388,77	402	Caja/box 25uds./units	naranja / orange

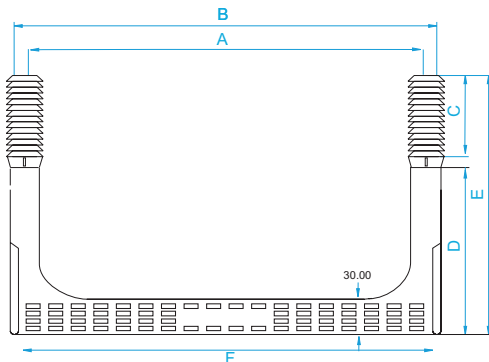


MANHOLES STEPS: SPECIAL LINE

PATE SUGAR®

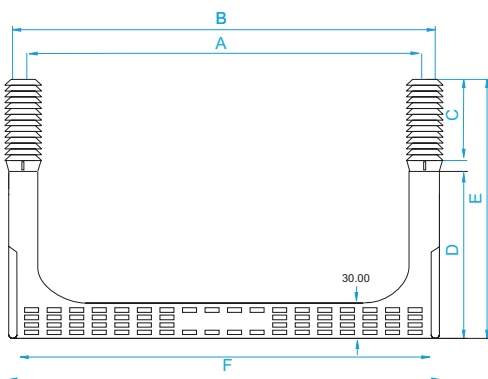
Inoxgrip 330CR

Designed for intensive use, Inoxgrip comes with extra grip made in stainless steel to evacuate the mud from the work boots, having an extra security during the ascent and/or descent of the operator.



Sugargrip 330CR

Our Sugargrip manhole step has an extra non-slip rung that offers better grip and comfort than the traditional steps.



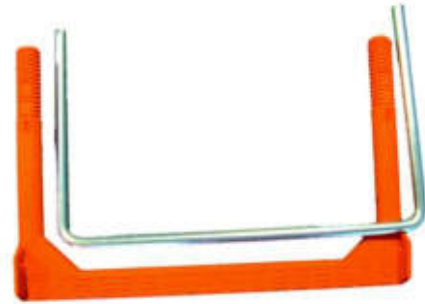
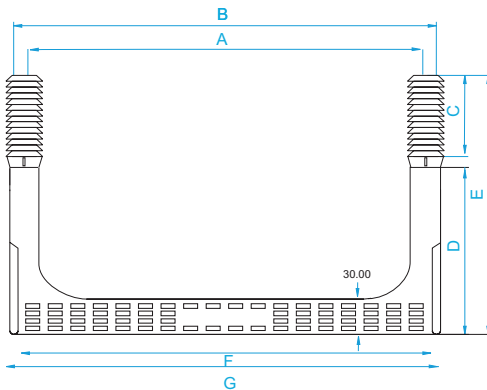


MANHOLES STEPS: SPECIAL LINE



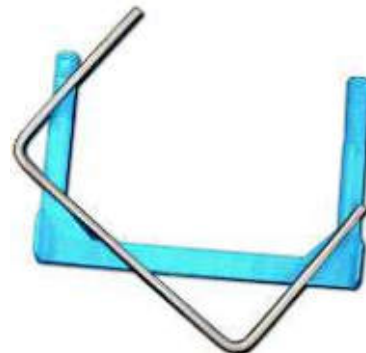
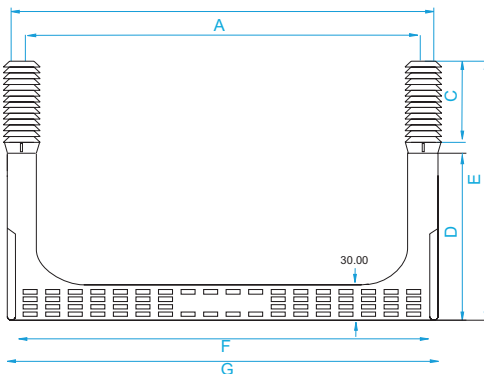
330CR Manhole step reinforced with zincated steel

Manhole step made with polypropylene copolymer 100% virgin for excellent strength and durability of the step, reinforced with zincate steel of quality.



Marine step 330CR

This MARINE Step is manufactured using a 12mm ribbed bar of stainless steel with quality AISI-304 o AISI-316 and the polypropylene is protected by a master that prevents damages and deterioration in the long term caused by sunlight and ultraviolet rays. It is ideal for docks and all kinds of aggressive environments.



Modelo / model	Medidas / measures							Embalaje / package	Color / colour
	A	B	C	D	E	F	G		
330 C-R INOXGRIP	330	357	80	160	240	339,77	352	Caja/box 25uds./units	naranja / orange
330 C-R SUGARGRIP	330	357	80	160	240	339,77	352	Caja/box 25uds./units	naranja / orange
330 C-R ZINC	330	357	80	160	240	339,77	352	Caja/box 25uds./units	naranja / orange
330 C-R MARINO INOX AISI 304	330	357	80	160	240	339,77	352	Caja/box 25uds./units	naranja / orange
330 C-R MARINO INOX AISI 316	330	357	80	160	240	339,77	352	Caja/box 25uds./units	naranja / orange