



## MANHOLES STEPS: SPECIAL LINE



### General characteristics

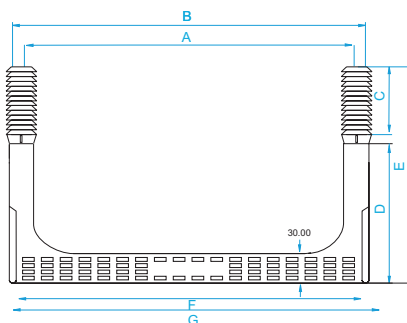
- Polypropylene copolymer reinforced calibrated steel with hardness of 65kg / mm<sup>2</sup>.
- Manufactured for curved and straight surfaces.
- Ergonomic design, compact, robust and with great resistance to impact.
- Non-slip surface and side fins.
- Crash limit for the correct insertion of the manhole step.
- Personalized up to the customer's needs.
- Conformity to European Standard EN-13101, American ASTM C-478, C-497 and German DIN19555.
- IVERNA is one of the few companies that owns a quality laboratory to surpass the European Norm EN 13101 tests required in every batch of 1000 units.

### Installation

Drill two holes with a heavy hammer drill (85mm. depth), using a 25mm ø broach. The distance between the center of the holes is 330, 320 or 300mm depending on model). Introduce the Pate hitting alternatively in both sides of it with a big size nylon hammer.

### Pate 400 C-R y Pate 400 C-R Plus

400 C-R and 400 C-R PLUS steps are the only manhole steps on the market that exceed and surpass the quality tests and standards established by LPRL 31/1995 law, Law of Prevention of Labour Risks and Royal Decree 486/1997, for security and health in working places.



Modelo / model	Medidas / measures							Embalaje / package	Color / colour
	A	B	C	D	E	F	G		
400 C-R	380	407	80	160	240	389,77	402	Caja/box 25uds./units	naranja / orange
400 C-R ZINC	380	407	80	160	240	389,77	402	Caja/box 25uds./units	naranja / orange
400 C-R INOX AISI 304	380	407	80	160	240	389,77	402	Caja/box 25uds./units	naranja / orange
400 C-R INOX AISI 316	380	407	80	160	240	389,77	402	Caja/box 25uds./units	naranja / orange
400 C-R PLUS/ZINC	380	407	80	190	270	388,77	402	Caja/box 25uds./units	naranja / orange

